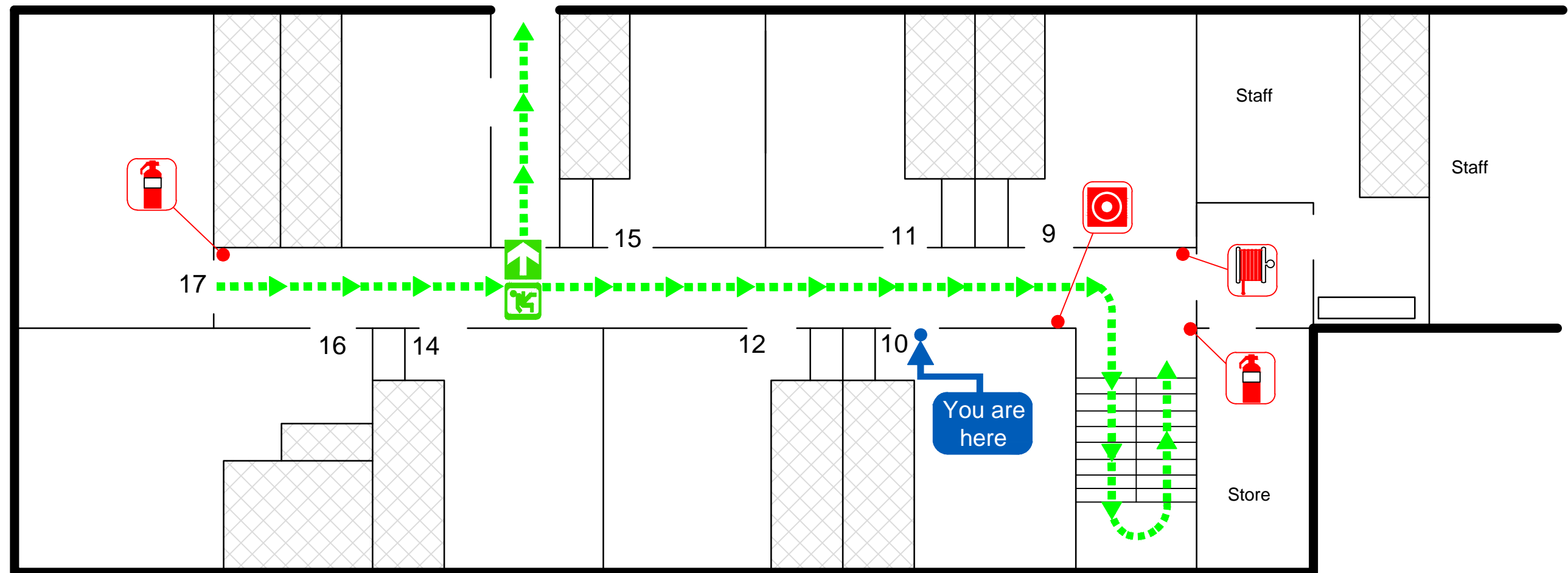
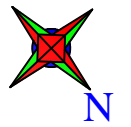


EVACUATION DIAGRAM

NAME : CHALET SONNENHOF
ADDRESS : 29 Wheatley Rd, Perisher Valley NSW 2624
Second Floor



NOT TO SCALE

EVACUATION PROCEDURE

RACE PRINCIPLE








STAGE 1:- REMOVE people, occupants and staff away from the danger.

STAGE 2:- ALERT the Fire Service. Telephone "000". Notify Warden/chief Warden.

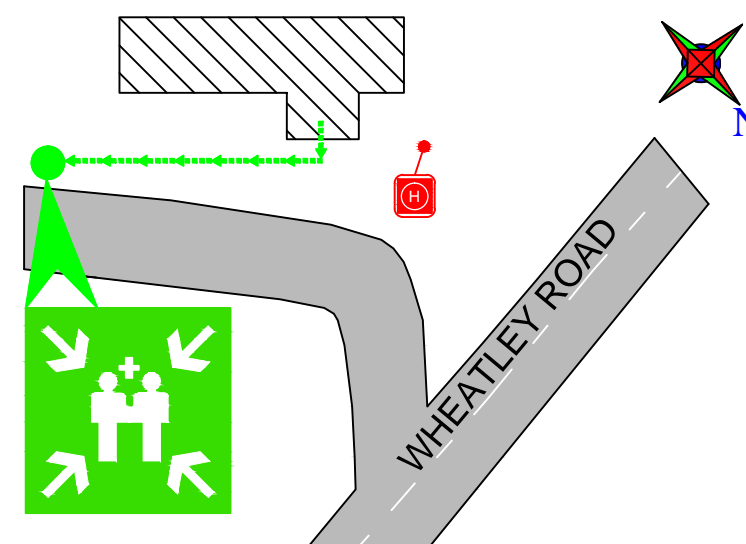
STAGE 3:- CONTAIN the danger (fire) where possible, where safe to do so and if trained to do so.

STAGE 4:- EVACUATE: Follow (chief) warden's instruction, close doors behind you and go to the assembly area.

LEGEND

-  POWDER EXTINGUISHER
-  FIRE HOSE REEL
-  MANUAL CALL POINT
-  FIRE HYDRANT
-  EMERGENCY EXIT
-  EXIT ROUTE
-  ASSEMBLY AREA

SITE LOCATION



Prepared by:
SPS Fire and Safety
Contact: 1800 799 147
www.spsservices.com.au
Date Prepared: 05-March-2015
To be printed in A3 size
Validity 5 Years

EVACUATION PROCEDURE










RACE PRINCIPLE
STAGE 1:- REMOVE people, occupants and staff away from the danger.

STAGE 2:- ALERT the Fire Service. Telephone "000". Notify Warden/chief Warden.

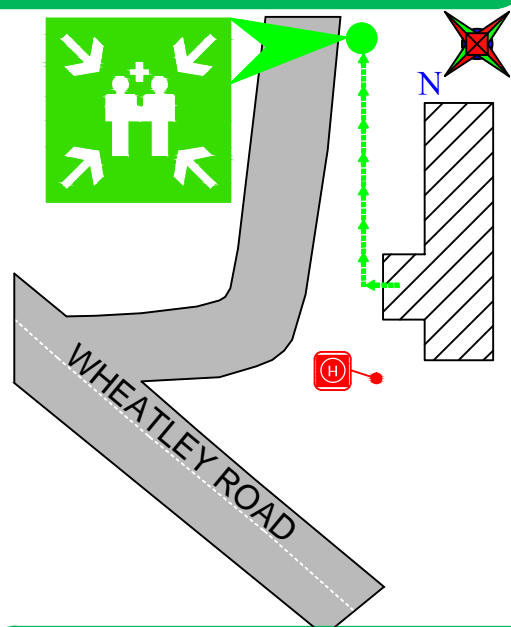
STAGE 3:- CONTAIN the danger (fire) where possible, where safe to do so and if trained to do so.

STAGE 4:- EVACUATE: Follow (chief)warden's instruction,close doors behind you and go to the assembly area.

LEGEND

-  CO2 EXTINGUISHER
-  POWDER EXTINGUISHER
-  FIRE BLANKET
-  FIRE HOSE REEL
-  MANUAL CALL POINT
-  FIRE HYDRANT
-  EMERGENCY EXIT
-  EXIT ROUTE
-  ASSEMBLY AREA

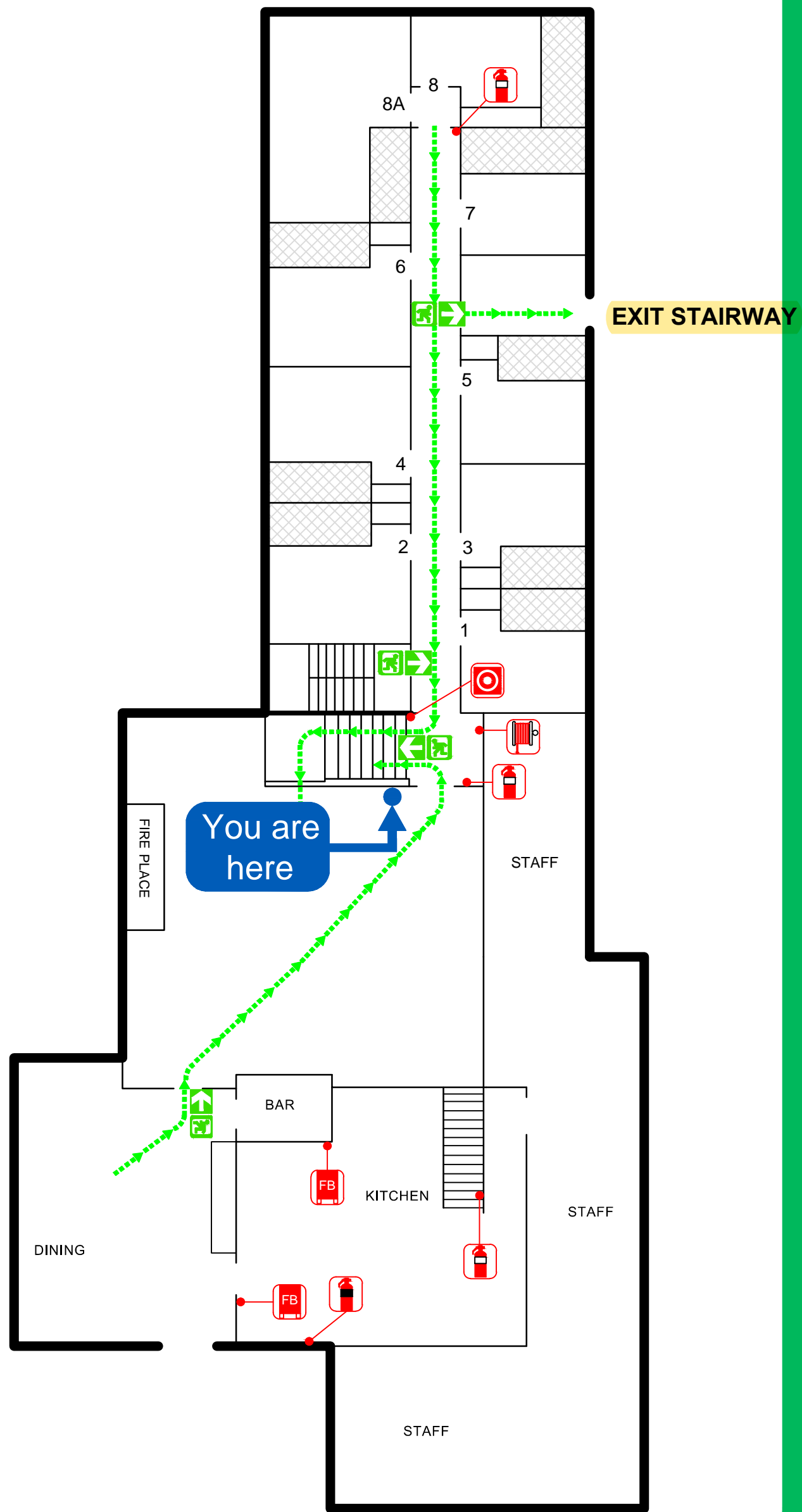
SITE LOCATION



Prepared by:
SPS Fire and Safety
Contact: 1800 799 147
www.spsservices.com.au
Date Prepared:
05-March-2015
To be printed in A3 size

EVACUATION DIAGRAM

NAME : CHALET SONNENHOF
ADDRESS :29 Wheatley Rd, Perisher Valley NSW 2624
First Floor



NOT TO SCALE

EVACUATION PROCEDURE

RACE PRINCIPLE






STAGE 1:- REMOVE people, occupants and staff away from the danger.

STAGE 2:- ALERT the Fire Service. Telephone "000". Notify Warden/chief Warden.

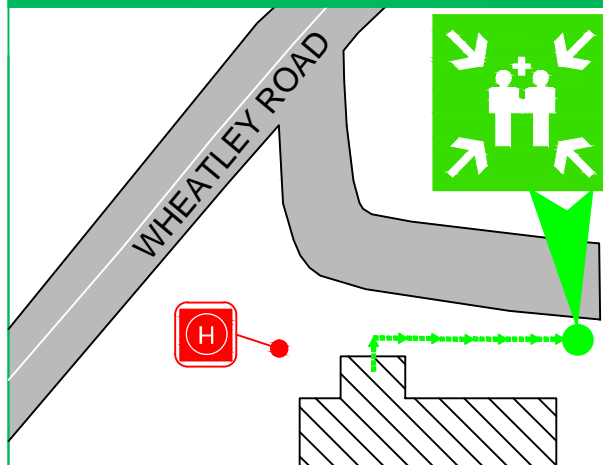
STAGE 3:- CONTAIN the danger (fire) where possible, where safe to do so and if trained to do so.

STAGE 4:- EVACUATE: Follow (chief) warden's instruction, close doors behind you and go to the assembly area.

LEGEND

-  POWDER EXTINGUISHER
-  FIRE HOSE REEL
-  FIRE INDICATOR PANEL
-  MANUAL CALL POINT
-  FIRE HYDRANT
-  EMERGENCY EXIT
-  EXIT ROUTE
-  ASSEMBLY AREA

SITE LOCATION



Prepared by:
SPS Fire and Safety
Contact: 1800 799 147
www.spsservices.com.au

Date Prepared:
05-March-2015

To be printed in A3 size
Validity 5 years



EVACUATION DIAGRAM

NAME : CHALET SONNENHOF

ADDRESS : 29 Wheatley Rd, Perisher Valley NSW 2624
Ground Floor

